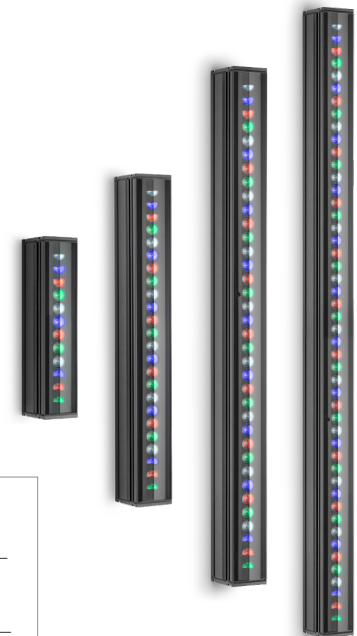


DESCRIPTION

PARADE L linear luminaires are available in one-foot increments up to four feet overall length. Each model features premium quality high brightness LEDs and a comprehensive selection of ten light distributions. Adjustable brackets are available in three standard lengths. Standard built-in programming capabilities include economical stand-alone operation or master-satellite configurations without the use of external control systems, or operation by remote DMX512 control systems. Four standard finishes are available with options for marine-grade or custom RAL finishes on request. All hardware is stainless steel.



Date: _____ Type: _____ Catalog Number: _____

Project Name: _____

ORDERING INFORMATION

LUMINAIRE							
MODEL	CCT	CONTROL	CABLE	VOLTAGE	OPTIC	FINISH	OPTION
PDL1 Parade L1 - 1' Length	RGBW30K RGBW 3000K	DMX-RDM DMX-RDM	M Monocable Without Connectors (19.7")	UNV 120-277v	SP Spot 8°	AG Anthracite Grey	AST Anti-Saline Treatment
PDL2 Parade L2 - 2' Length	RGBW40K RGBW 4000K	DIM 0-10v Dimming ¹	C Monocable With Connectors (19.7")		NB Narrow 12°	BL Black	LVR Internal Honeycomb Louver
PDL3 Parade L3 - 3' Length					MB Medium 26°	SG Griven Silver Grey	
PDL4 Parade L4 - 4' Length					WB Wide 40°	WH White	
PDL1PE Parade L1 Polar Edition - 1' Length					EW Extra Wide 58°	CC Custom RAL Color	
PDL2PE Parade L2 Polar Edition - 2' Length					ELH Elliptical 42° x 11°		
PDL3PE Parade L3 Polar Edition - 3' Length					ELWH Elliptical Wide 40° x 24°		
PDL4PE Parade L4 Polar Edition - 4' Length					WW Wall Wash 36° x 15° (5° Incline)		

¹Dimming is available only on 1', 2', and 3' lengths.

Custom options are available; consult factory for assistance via phone at (864) 487-3535 ext. 258 or via email at DesignServices@EXP-Brands.com.

See Page 4 for ordering information of available and required accessories.



		PARADE L1	PARADE L2	PARADE L3	PARADE L4
PHYSICAL	HOUSING	Extruded Aluminum			
	LENS	Tempered Glass			
	DRIVER LOCATION	Integral			
	DIMENSIONS	12 5/8" L x 3 3/4 W x 3" H	24 1/8" L x 3 3/4 W x 3" H	36 1/8" L x 3 3/4 W x 3" H	48 1/8" L x 3 3/4 W x 3" H
	WEIGHT	4 Pounds	6.2 Pounds	9.7 Pounds	12.4 Pounds
	OPERATING TEMPERATURE	-40°F to 122°F (-40°C to 50°C)			

ELECTRICAL	VOLTAGE	Universal 120 to 277 Volts			
	POWER CONSUMPTION	20 Watts	38 Watts	58 Watts	78 Watts
	CURRENT	0.17 Amps at 120 Volts 0.07 Amps at 277 Volts	0.32 Amps at 120 Volts 0.14 Amps at 277 Volts	0.48 Amps at 120 Volts 0.21 Amps at 277 Volts	0.65 Amps at 120 Volts 0.28 Amps at 277 Volts
	CONTROL	DMX-RDM / 0-10v Dimming (1', 2', 3' models only)			
	CABLE	19.7" Monocable			
	CONNECTION KIT	GRIVEN-CON-KIT-8287			

PHOTOMETRIC	LED	RGBW (3000K or 4000K White)	
	LUMEN MAINTENANCE	L70 > 100,000 Hours at 77°F*	
	PHYSICAL AIMING	+/- 90°	

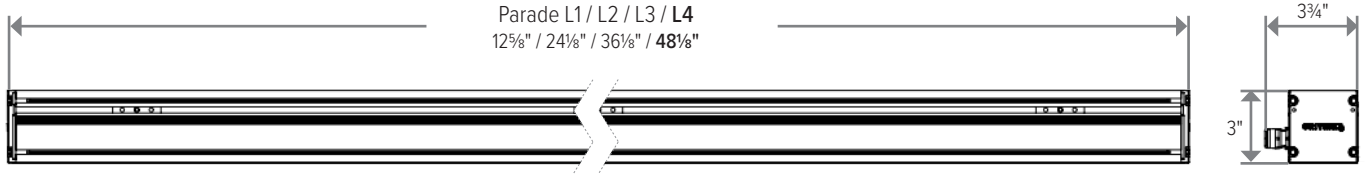
			PARADE L1	PARADE L2	PARADE L3	PARADE L4				
LIGHT DISTRIBUTIONS	DISTRIBUTION	BEAM ANGLE	LUMENS	EFFICACY	LUMENS	EFFICACY	LUMENS	EFFICACY	LUMENS	EFFICACY
	RGBW30K	SPOT	8°	880	44	2008	53	2462	42	3364
NARROW		12°	847	42	1926	51	2375	41	3234	41
MEDIUM		26°	858	43	1954	51	2383	41	3243	42
WIDE		40°	773	39	1760	46	2144	37	2917	37
EXTRA-WIDE		58°	605	30	1378	36	1677	29	2283	29
ELLIPTICAL		42° X 11°	800	40	1823	48	2224	38	3028	39
ELLIPTICAL WIDE		40° X 24°	737	37	1679	44	2047	35	2786	36
RGBW40K	WALL WASH	36° X 15° (5° INCLINE)	775	39	1762	46	2150	37	2926	38
	SPOT	8°	912	46	2070	54	2538	44	3468	44
	NARROW	12°	872	44	1986	52	2448	42	3334	43
	MEDIUM	26°	885	44	2014	53	2457	42	3343	43
	WIDE	40°	797	40	1814	48	2210	38	3007	39
	EXTRA-WIDE	58°	624	31	1420	37	1729	30	2354	30
	ELLIPTICAL	42° X 11°	825	41	1879	49	2293	40	3122	40
ELLIPTICAL WIDE	40° X 24°	760	38	1731	46	2110	36	2872	37	
	WALL WASH	36° X 15° (5° INCLINE)	799	40	1816	48	2216	38	3016	39

Values based on delivered lumens at full output.

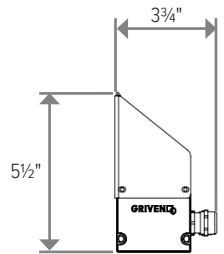
CERTIFICATIONS	SAFETY	ETL Certified for Wet Locations			
	INGRESS PROTECTION	IP67			
	IMPACT RATING	IK09	IK10	IK09	IK10
	WARRANTY	Five Year Limited Warranty			

DIMENSIONS

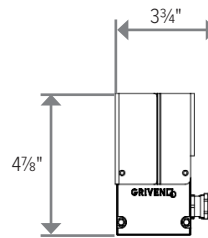
All dimensions are shown in inches unless otherwise noted.



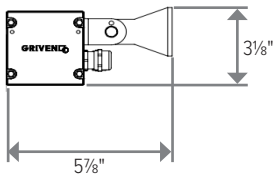
ACCESSORY DIMENSIONS



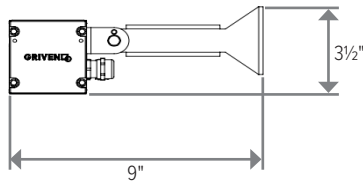
Parade with Visor



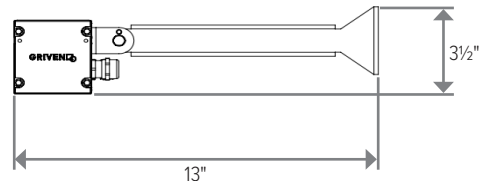
Parade with Snoot



Parade with 3" Mount



Parade with 6" Mount



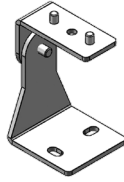
Parade with 10" Mount

ACCESSORIES

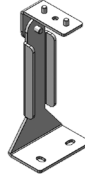
NOTE: Accessories are ordered and shipped separately from luminaire for field installation.



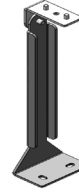
IR-CONFIG-REMOTE
Infrared DMX Configuration Remote



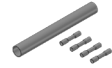
PDL-BRKT-3IN
3" Mounting Brackets (2)



PDL-BRKT-6IN
6" Mounting Brackets (2)



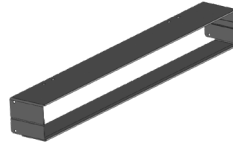
PDL-BRKT-10IN
10" Mounting Brackets (2)



GRIVEN-CON-KIT-8287
Connection Kit for "M" Cable Type

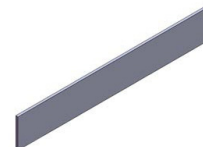


Visor



Snoot

See ordering information below.



Honeycomb Louver

ORDERING INFORMATION

PAINTED ACCESSORIES

MODEL	ACCESSORY	FINISH
PDL1 Parade L1	VISOR Louver	AG Anthracite Grey
PDL2 Parade L2	SNOOT Snoot	BL Black
PDL3 Parade L3	LVR External Honeycomb Louver	SG Griven Silver Grey
PDL4 Parade L4		WH White
		CC Custom RAL Color

ORDERING INFORMATION

UNPAINTED ACCESSORIES

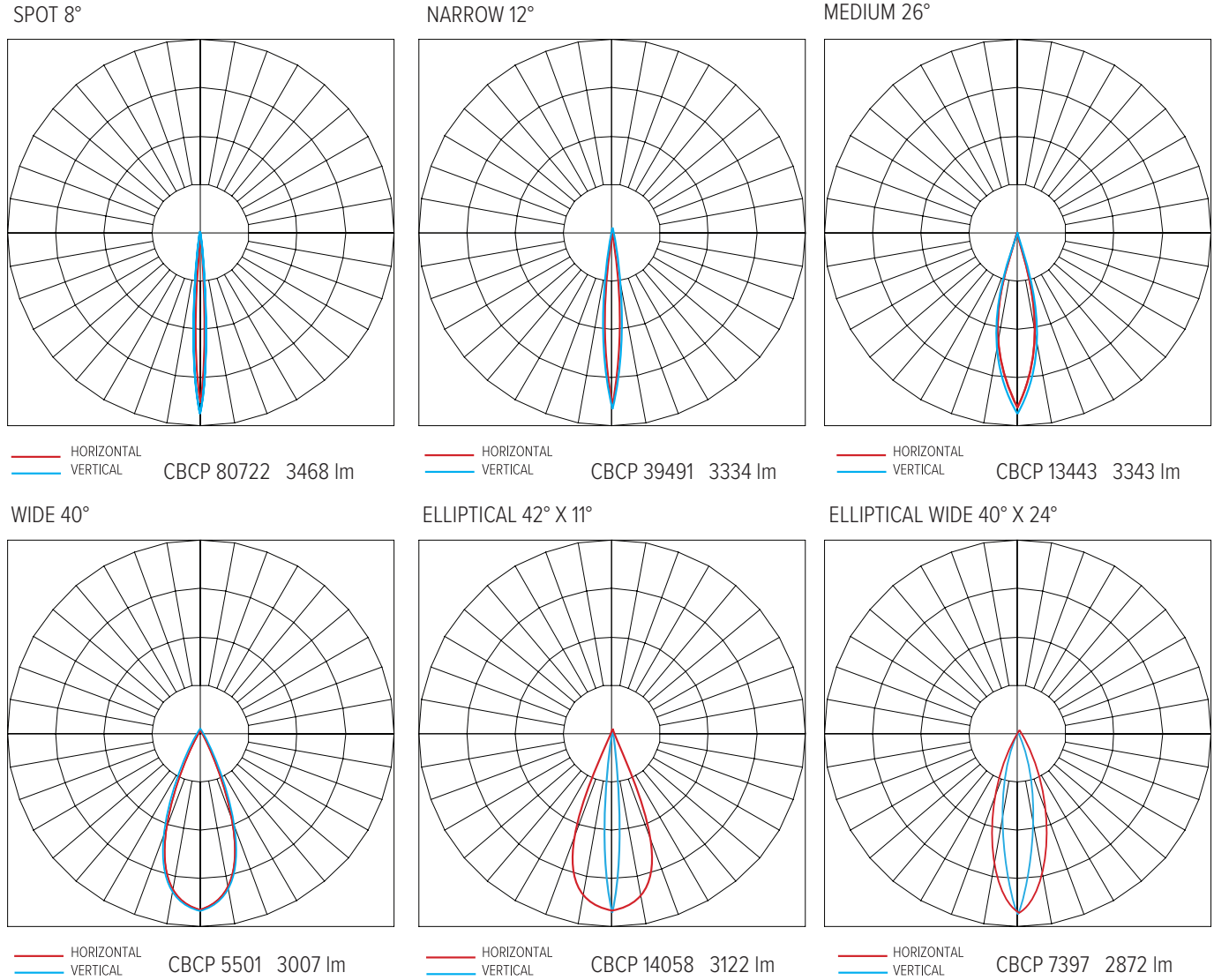
MODEL
IR-CONFIG-REMOTE Infrared DMX Configuration Remote ¹
PDL-BRKT-3IN Parade Mounting Brackets, Set of 2, 3" Height
PDL-BRKT-6IN Parade Mounting Brackets, Set of 2, 6" Height
PDL-BRKT-10IN Parade Mounting Brackets, Set of 2, 10" Height
GRIVEN-CON-KIT-8287 Connection Kit for "M" Cable

¹Unless an RDM compatible control is used, one IR-CONFIG-REMOTE must always be purchased with one or more DMX/RDM luminaires in order to access DMX addressing.

PHOTOMETRICS

Values shown are for PDL4. Multiply by 75%, 50%, and 25% respectively for PDL3, PDL2, and PDL1.

CANDELA DISTRIBUTION

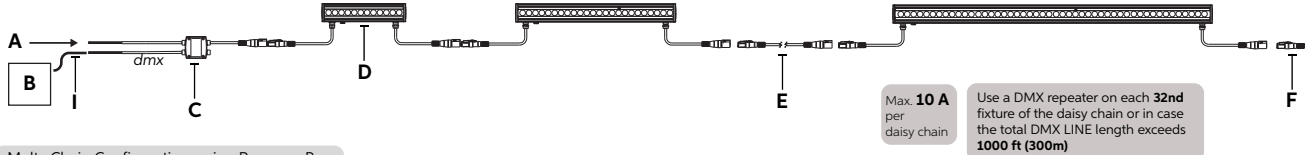


CONTROL OPTIONS (DMX512, PRIMARY CONTROL PLATFORM)

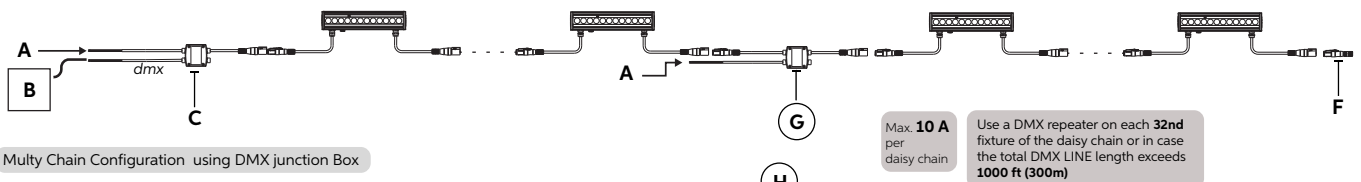
Contact manufacturer for control system development.

Copyright © 2020, GRIVEN S.r.l World Lighting Challenge - www.griven.com

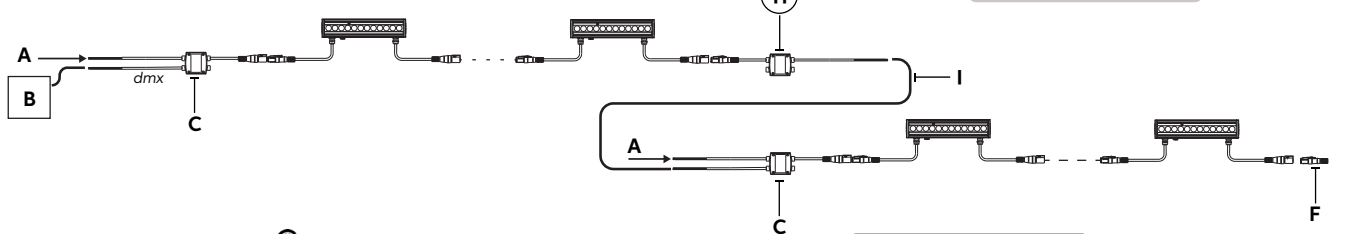
Single Chain Configuration



Multy Chain Configuration using Repower Box



Multy Chain Configuration using DMX junction Box



- A - Power Input CE ver. 220-240 Vac - ver. 120 & 277 Vac
- B - DMX/RDM Controller
- C - Start Line Box - AL5058C with connectors / AL5058M without connectors
- D - Parade L-1, L-2, L-3, L-4, L-2 Recessed, L-3 Recessed
- E - Connection Cable - AL8264 L=1m AL8265 L=2m AL8266 L=3m AL8267 L=5m AL8268 L=10m
- F - DMX Terminator - AL5169
- G - Repower Box - AL5167C with connectos / AL5167M without connectors
- H - DMX Junction Box - AL5059C with connectors / AL5059M without connectors
- I - DMX Cable - AL0512

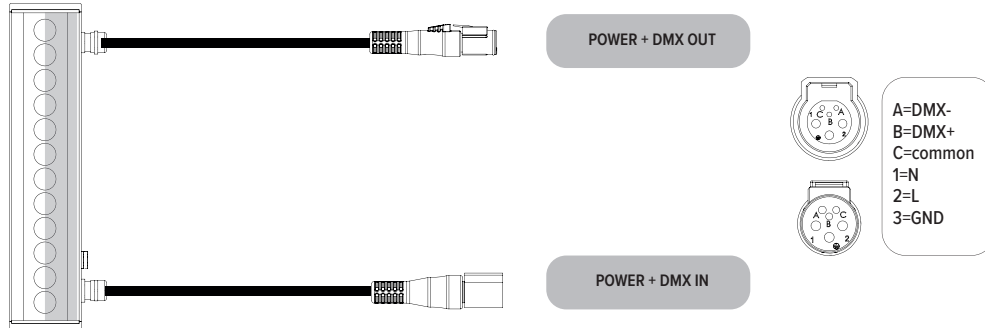
CE Colours	USE
Brown	Live
Blue	Neutral
Yellow/Green	Ground
Red	DMX Data +
Black	DMX Data -
White	DMX GND

NOTES:

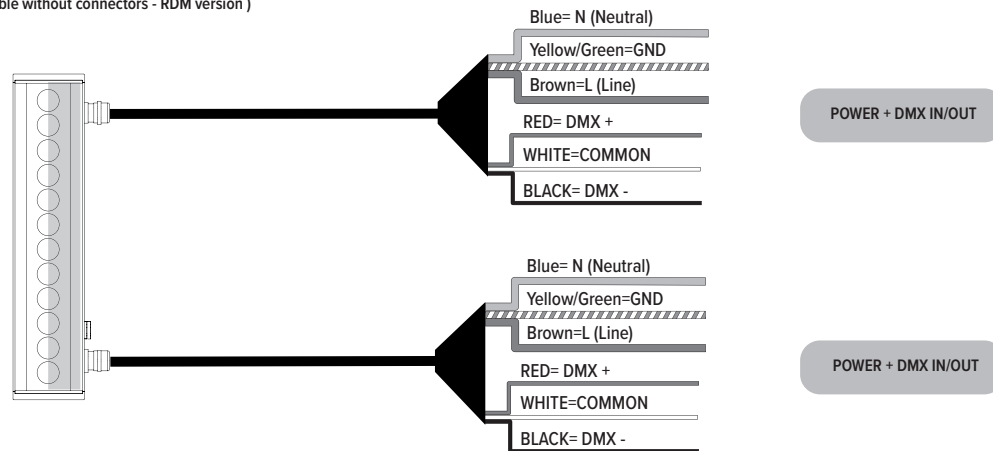
1. Wire specifications are available from factory as well as approved wire for purchase.
2. Other control protocol solutions available. Contact factory for more information.
3. Wireless components are external to fixture. Distance limitations based on antennas chosen and site conditions. Contact factory for more information.
4. Based on maximum of 32 fixtures per run as well as any site constraints on conveyance of data.
5. For example: Lutron, Crestron, Encelium, Douglas, ETC by others. Griven control system will interface with building lighting control system.
6. Local wall controller for small applications. Wall controllers specified separately for larger systems.
7. Contact factory for assistance with specification. Onsite commissioning by Griven of control system is required.

CONNECTIONS

“C” Type cable (Monocable + connectors)



“M” Type cable (Monocable without connectors - RDM version)



CUSTOMIZE YOUR EXPERIENCE.

At Experience Brands, we believe every space deserves unique lighting elements. We proudly specialize in crafting solutions that reflect your personal vision. Our expert team is here to collaborate with you to design and implement customized features that elevate your environment.

Ready to Get Started? Email us at: DesignServices@exp-brands.com